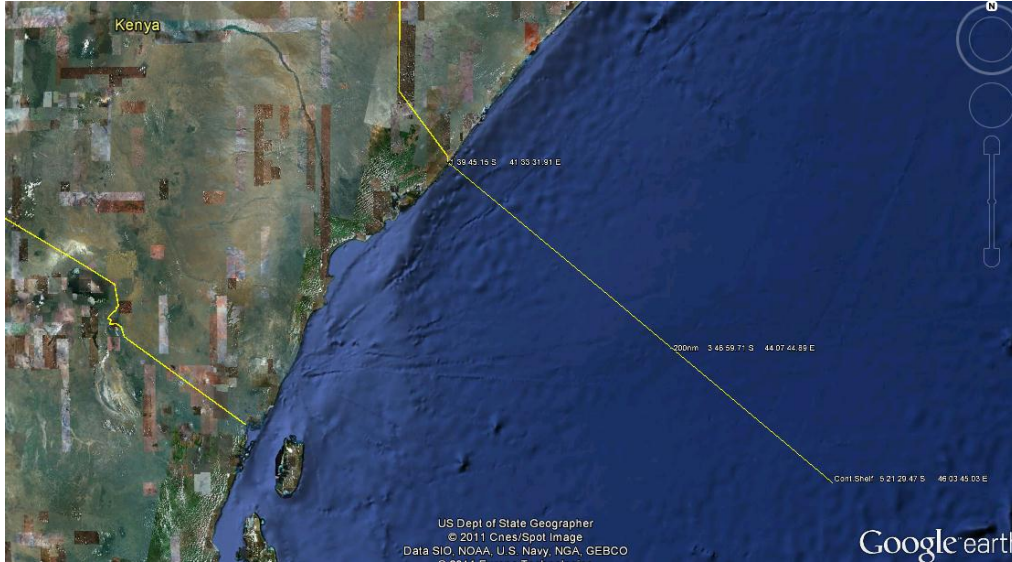


KENYA oo shidaal ka baaraneeyso 3900 KmSq ee Dhulbadeeka Jamhuriyadda Somalia

By Saalihi e-mail: awoowe30@hotmail.com

Xad badeedka Kenya iyo Somalia, ayadoo la raacayo xariiqda ku qotonta (perpendicular to) xeebta.

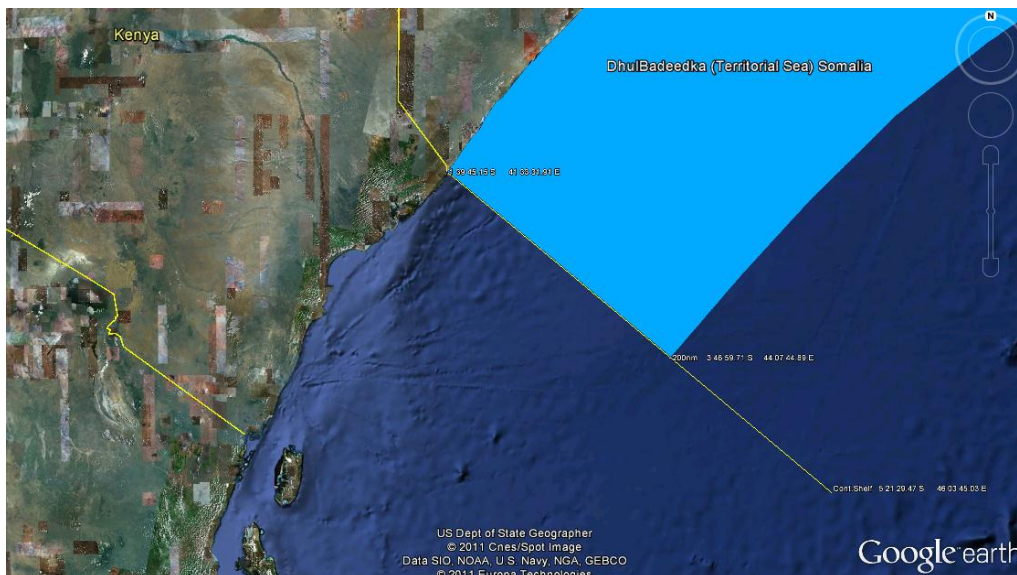


Naqshdaan sare waxaa ka muuqda coordinaatka (deg min sec) ee 3 barood oo ku kala yaala:

Barta Xeebta ku taala:	1 39 45.1541 S	41 33 31.9079 E
Barta 200nm ay ku egtahay Dhulbadeedka Somalia:	3 46 59.7075 S	44 07 44.8889 E
Barta 350nm ay ku egtahay Khalfoofka qaradeed	5 21 29.4669 S	46 03 45.0319 E

Sida ay ku timid, eeg bogagga 34 illa 37: <http://www.somalitalk.com/2009/may/13/sboundary.pdf>

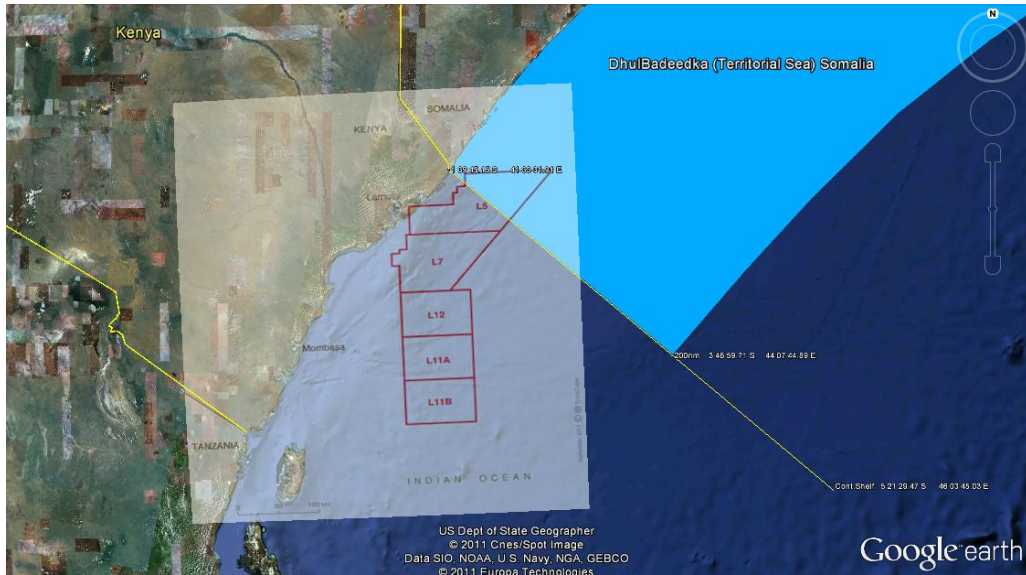
Hadaba Dhulbadeedka Somalia (200nm) oo ka muuqda sawirka soo socda:



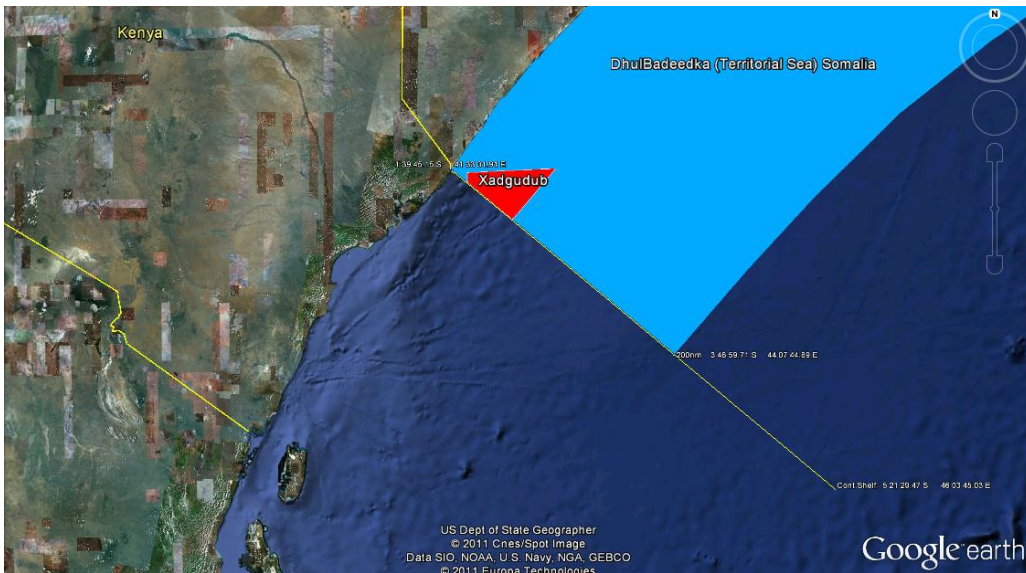
Hadaba Kenya waxeey sameeysatay BLOCKs(xirmooyiin ee xagga badda ah) lagana baarayo shidaal.

BLOCK-yadaas waxaa kamid ah BLOCK L5 oo gudaha u soo galay DhulBadeedka Jamhuriyadda Somaliya (eeg sawirka halkaan ku lifaaqan). Waxeey heshiis baaris shidaal ee xagga badda Kenya kula gashay Shirkada TOTAL. Wixii faahfaahin ah ka akhriso webpage-ka TOTAL oo ah:

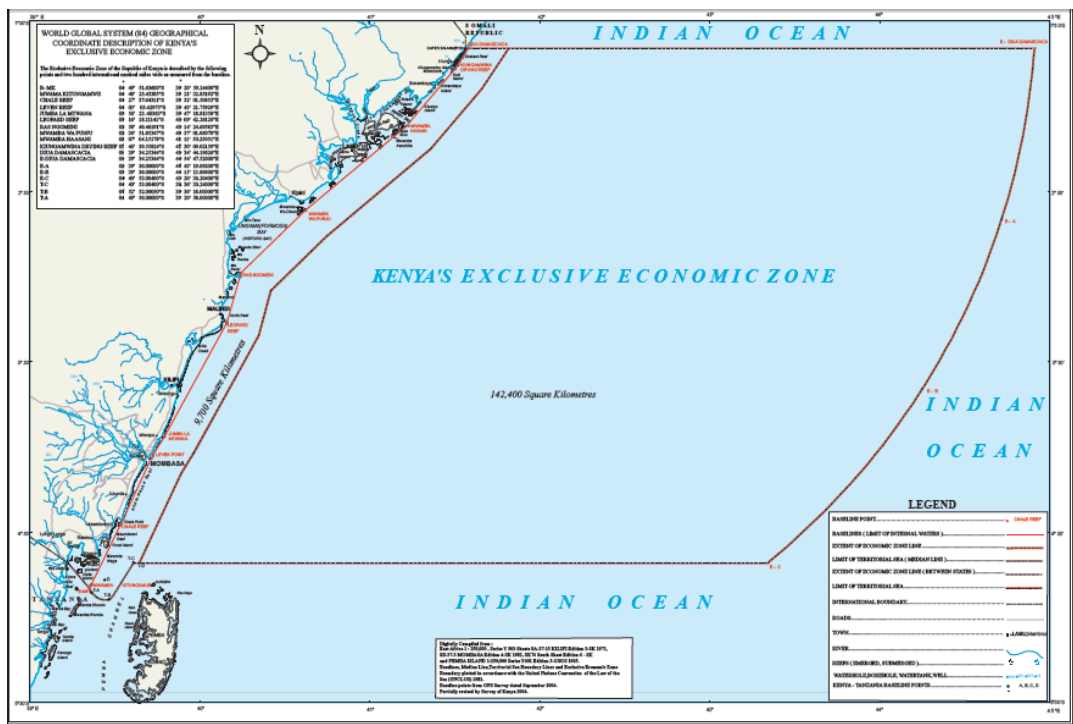
<http://www.total.com/en/about-total/news/news-940500.html%26idActu%3d2654>



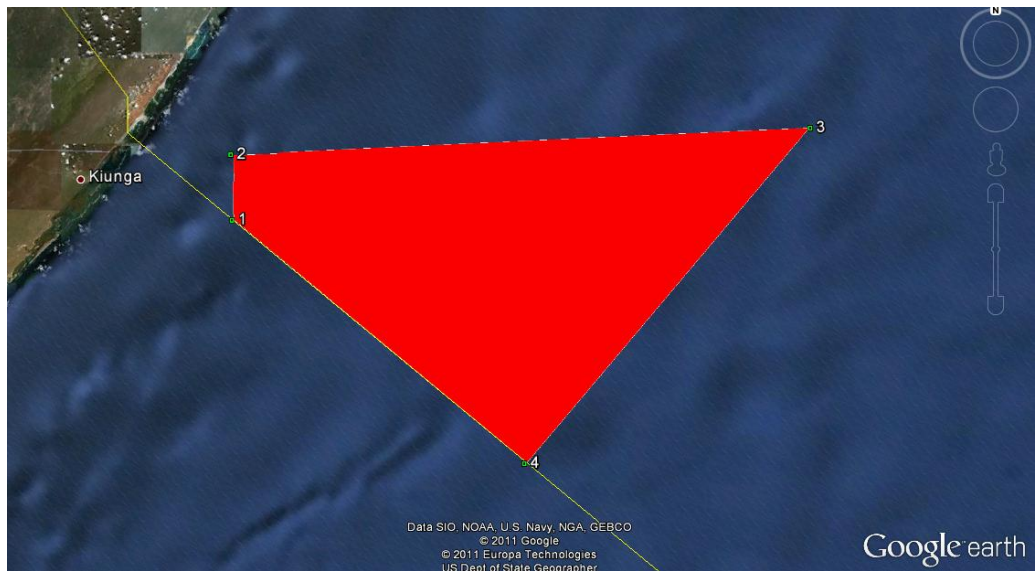
Kenya waxeey gudaha Jamhuriyada Somaliya ka baaran rabta dhulka badkiisu ku xusan naqshadda soo socota:



Shegashadaan KENYA waxeey dabasocota map hore ay u gudbisatay UN-ka (UNCLOS)



Coordinates-ka gesaha DhulBadeedka lagu soo xadgudbay oo tafatiran:



Point	Easting[m]	Northing[m]	UTM Zone
1	805255	9799157	37
2	805043	9811851	37
3	250637	9817092	38
4	194853	9751951	38

Hadaba si loo ogaado inta uu la egyahay bedka Xadgudubka, waa in dhammaan UTM Coordinate-yada noqdaan kuwo isku Zone ah. Sidaas darted Points 3 iyo 4 oo ku yaala UTM Zone 38 waxaan u bedeleena UTM Zone 37 xisaab ahaan:

Point	Easting[m]	Northing[m]	UTM Zone
1	805255	9799157	37
2	805043	9811851	37
3	918376	9816836	37
4	862308	9751834	37

Formulaha lagu xisaabo bedka, haddii la haysto Coordinates-ka geesaha bedka waa:

$$\text{Bedka Xadgudub} = 0.5 * |(x_1*y_2 - y_1*x_2) + (x_2*y_3 - y_2*x_3) + (x_3*y_4 - y_3*x_4) + (x_4*y_1 - y_4*x_1)|$$

$$\text{Bedka Xadgudub} = 0.5 * |(805255*9811851 - 9799157*805043) + (805043*9816836 - 9811851*918376) + (918376*9751834 - 9816836*862308) + (862308*9799157 - 9751834*805255)|$$

$$\text{Bedka Xadgudub} = 0.5 * |(12299328254) + (-1107993370028) + (490714084096) + (597178386686)|$$

$$\text{Bedka Xadgudub} = 0.5 * |-7801570992|$$

$$\text{Bedka Xadgudub} = 3900785496 \text{ msq}$$

$$\text{Bedka Xadgudub} = 3900,785496 \text{ kmsq}$$